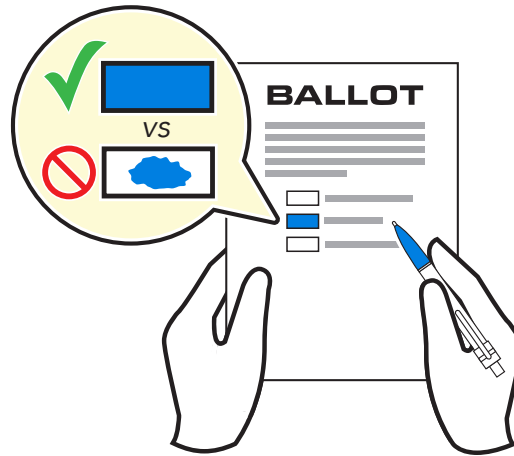


# How to cast your ballot using Verity Scan



**1** Mark your ballot in blue or black ink, *completely filling* the box next to each choice.\*

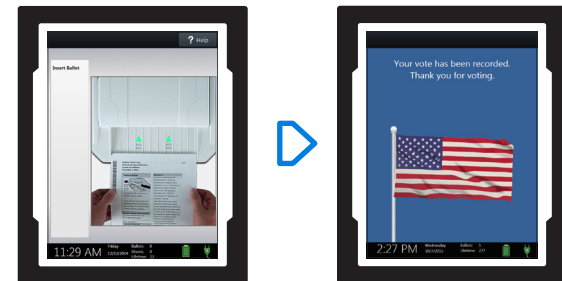


\* Alternatively, ask a poll worker for a ballot-marking device.

**2** Review your ballot carefully to confirm your selections.



**3** Cast your ballot by inserting it in the scanner.



A waving American flag appears, indicating success!